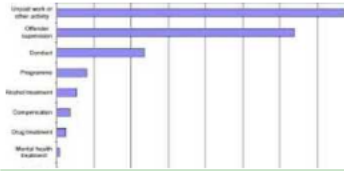
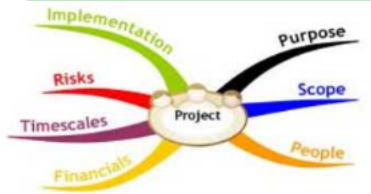


# 9 - Human Resource

## Planning



Activity Resource Requirements (6.4)



Project Management Plan (4.2)



Enterprise Environmental Factors



Organizational Process Assets

Enterprise / Organization

Inputs



T&T

To identify and document project roles, responsibilities, required skills, reporting relationships, and creating a staffing management plan.

Outputs

HR Management Plan



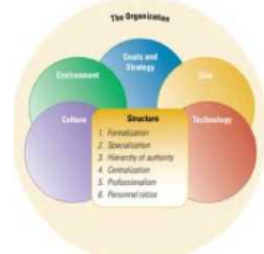
Organizational charts and position descriptions



Networking



Organizational Theory



Expert Judgment



Meetings



- 7.2 Estimate Costs
- 6.2 Define Activities
- 6.3 Sequence Activities
- 11.2 Identify Risks
- 11.4 Perform Quantitative Risk Analysis